

## SLUICE GATES by Watch Technologies



The right gate - at the right price - shipped in 4 to 6 weeks

Regardless of the application or size, Watch Technologies' sluice gates are durable, simple by design, easily maintained, customizable, and ready for any sort of actuation and automation.

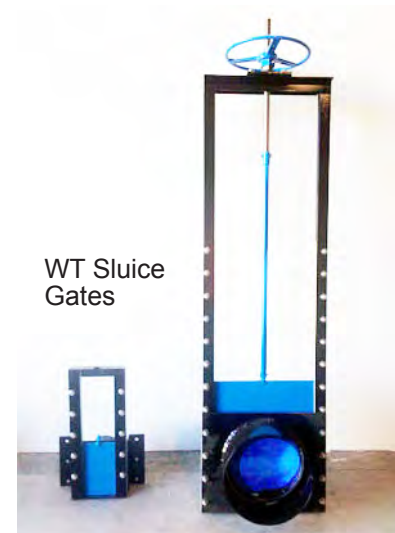
**Unique, robust design:** All WT gates, regardless of size, use a "frame and mate" UHMW "Guide and Slide" system. This guide capture, reduced-friction technique doubles frame strength, provides a wide yoke platform for the gate stem lift-nut assembly, gearlift, or actuator, reducing friction to negligible levels. This system also provides a simple, leakless\* guide seal and fits polished stainless steel runners on aluminum and mild-steel slide edges further reducing friction while removing rust as an issue.

### WT gates exceed AWWA C561 standards

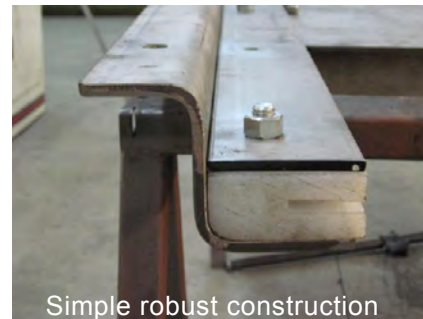
**With or without a "brain":** WT also offers fully integrated Smart-Gates ready to easily install for flow and level control, or gate position. An optional embedded controller consolidates SCADA control components into a single, easily deployed enclosure.

**Lower cost:** Because of design simplicity and lower cost of manufacturing, we offer higher quality gates for less.

**Instant fit with all Watch Technologies' integrated products:** WT is the ONLY U.S. company that designs and manufactures innovative sluice gates, gate actuators, and SCADA systems that **all link together seamlessly and cost efficiently** - *no system integration required.*



WT Sluice Gates



Simple robust construction

### Specifications Summary

- **Frame & supports** AL 6061T6, stainless steel 304,316, powder-coated carbon steel
- **Slide** 304, 316 stainless steel, coated carbon steel and AL 6061T6 w/ polished stainless steel guide runners
- **Slide Guides** UHMW ISO 1043-1
- **Top / Bottom Seals** Natural rubber or neoprene "P" seal
- **Treaded Stem** Typical 1", 1.25", 1.5" RH 4 TPI, 304 stainless steel, or any size or style on request
- **Slide-lift** 2:1, 3:1, and 4:1 gear-lift

\*Adjust UHMW guide tension on stainless slide runners for maximum seal prevention